

Block C Roof Level
65800

13 Block C Thirteenth Level
62050

12 Block C Twelfth Level
59050

11 Block C Eleventh Level
56050

10 Block C Tenth Level
53050

09 Block C Ninth Level
50050

08 Block C Eighth Level
47050

07 Block C Seventh Level
44050

06 Block C Sixth Level
41050

05 Block C Fifth Level
38050

04 Block C Fourth Level
35050

03 Block C Third Level
32050

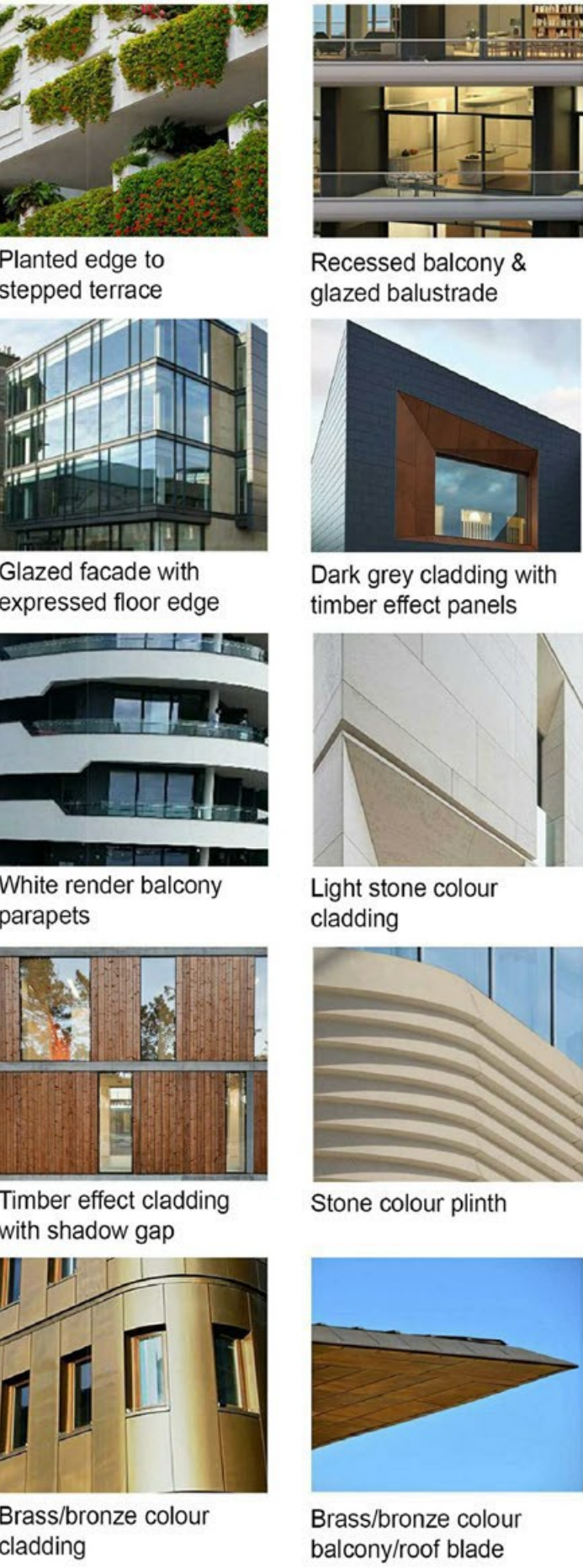
02 Block C Second Level
29050

01 Block C First Level
26050

00 Block C Ground Level
23050

-001 Block C Lobby
19520

Materials Legend:



Notes:

- All drawings are subject to Planning and Building Control consent.
- The details shown are for design intent purposes only and are subject to further design development with suppliers and sub-contractors
- Proposals subject to consultation and approval from Local Authority Building Control or an Approved Inspector
- All setting out dimensions should be checked on-site prior to construction and any discrepancies and/or omissions should be reported to the Architect immediately

Drawn By:
TS

Date:
25.06.17

Checked By:
PL

Date:
25.06.17

F	30.01.20	Window surrounds added to render facades
E	15.01.20	MMA Planning Issue
D	20.11.18	Amendments for planning
C	08.08.17	Updated to match latest plans
B	10.04.17	Revised to match latest plans
A	22.02.17	Minor amendments for Pre-App 3 Pack

Rev: Date Details

Issued for:

PLANNING

Project/Client:
Winter Gardens
Bournemouth

Project No:
19004

Scale:
1:100 @ A1

Drawing:
Block C- East Elevation

Dwg No:
718

Rev: F

JL JT
TS PL
PL JT
OM JT
OM JT
OM JT
OM JT
Drawn: Chkd

BrightSPACE
architects

27 Glasshouse Studios, Fryern Court Road, Fordingbridge, Hampshire, SP6 1QX
T: (01425) 655806/653639
www.brightspacearchitects.com

© BrightSpace Architects Ltd. Contractors must work only to figured dimensions which are to be checked on site. Registered Office: 17 Northover Rd, Pennington, Lyngdon, Hampshire, SO41 8DU. Registered Number: 07399008